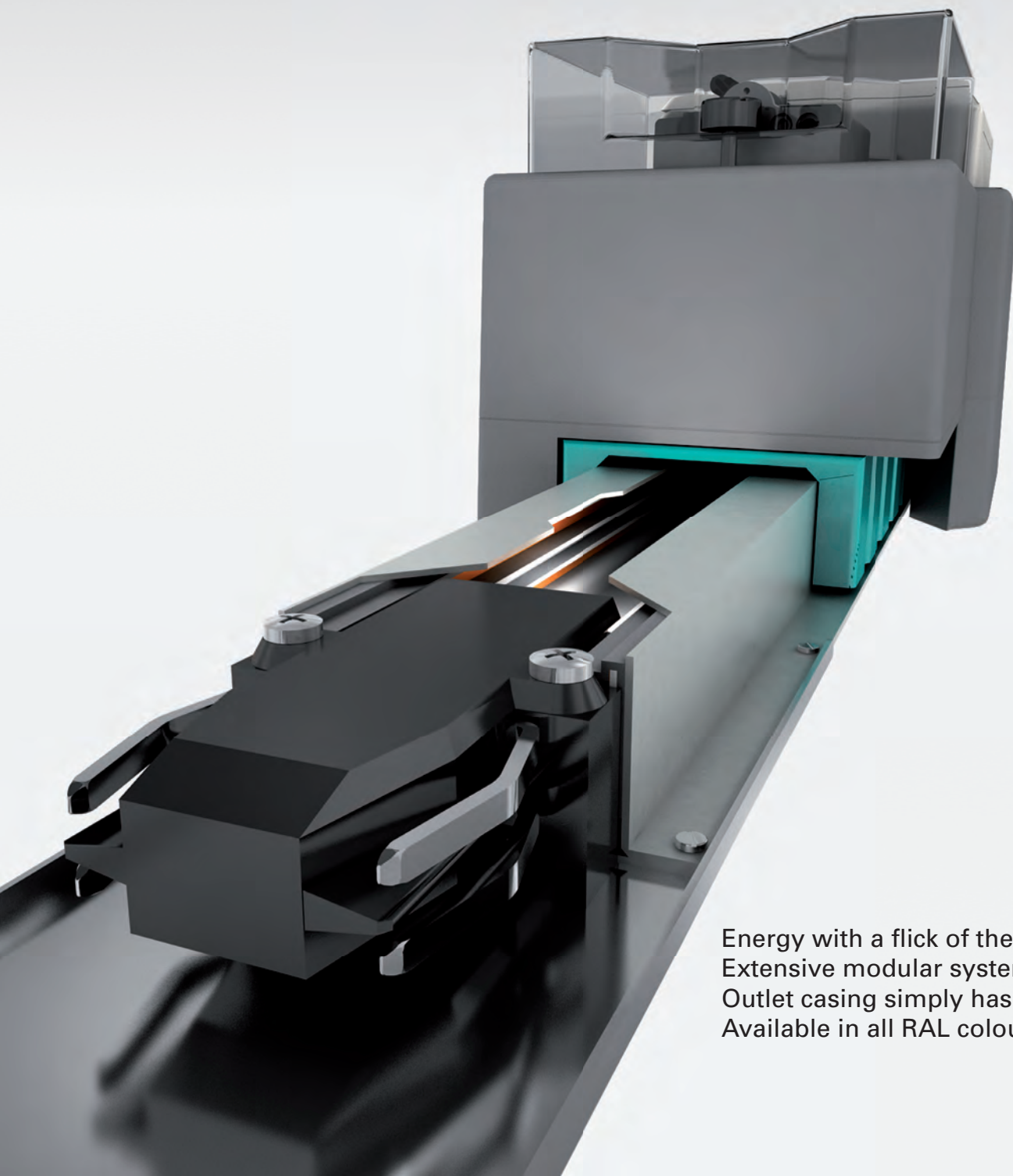


Deyle Power

Deyle Plug Line S

Power: safe and efficient

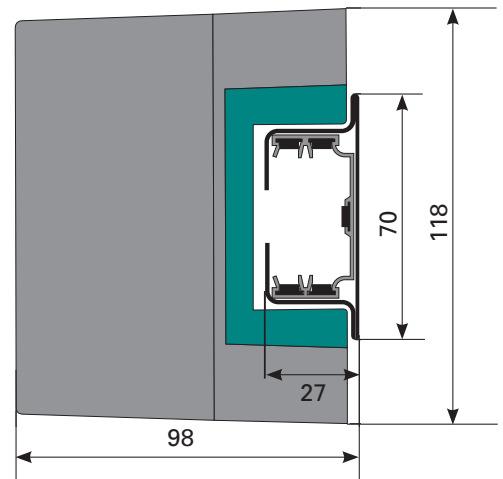
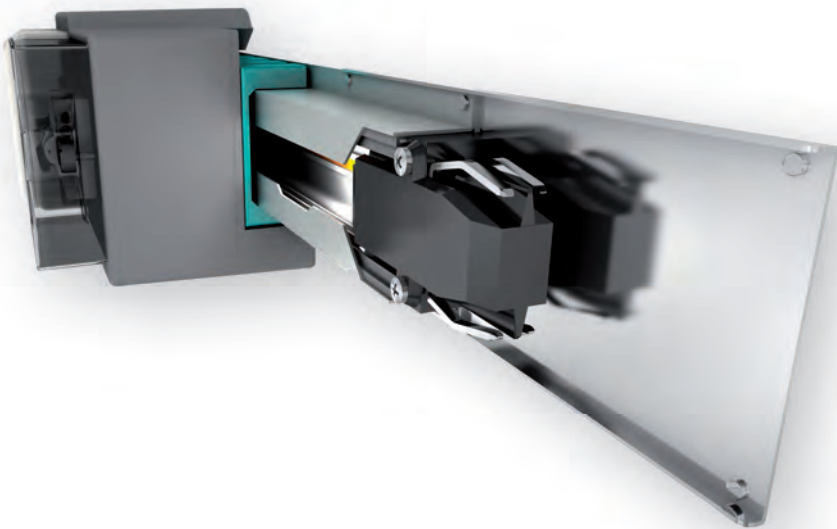


Energy with a flick of the wrist
Extensive modular system
Outlet casing simply has to be turned
Available in all RAL colours

Plug line S for more safety and efficiency

The Deyle plug line S delivers power exactly where it is needed. Without tangled wires, trip hazards, or detours.

The plug line S consists of a sendzimir galvanized steel profile with an integrated plastic profile to carry the copper conductors. The nominal current is either 25, 40, or 63 amperes. All outlet casings can be equipped and fused to your individual requirements. You can install more collectors at any point in the line later – without having to cut and strip cables. Simply adjust the panel and insert the collector – that's it.



Technical data	Type S
Protection class	IP50
Nominal voltage	500 V
Number of poles	3 + N + PE
Nominal contact current	16 A / 25 A
Standard lengths	3 m, 2 m, 1 m
Customised lengths	0.3 m – 3 m
Suspension span	1.5 m – 2 m
Housing profile	Steel, sendzimir galvanized
Inside profile	PVC 75
Temperature range	-30°C to +50°C
Designation	Nominal conductor current
SAN 5-25 (L = 3 m)	25 A
SAN 5-40 (L = 3 m)	40 A
SAN 5-63 (L = 3 m)	63 A



At Dungs in Urbach, the plug line S was mounted to square pipes (80 mm), which serve as compressed air piping and storage at the same time.



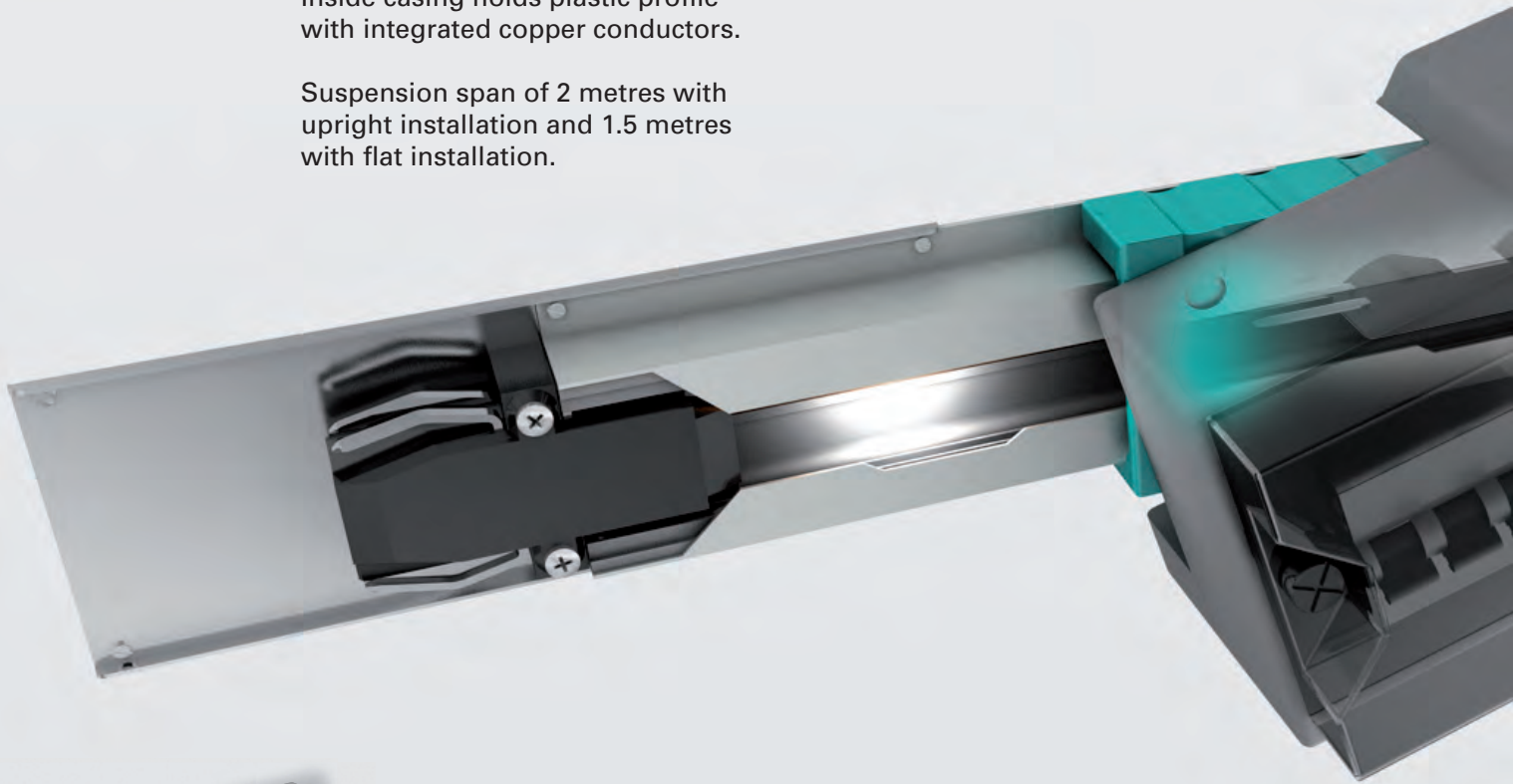
The Deyle plug line S: Your advantages at a glance.

Rugged and powerful –
for loads of up to 63 amperes.

Indestructible steel sheet housing
for rough environments.

Inside casing holds plastic profile
with integrated copper conductors.

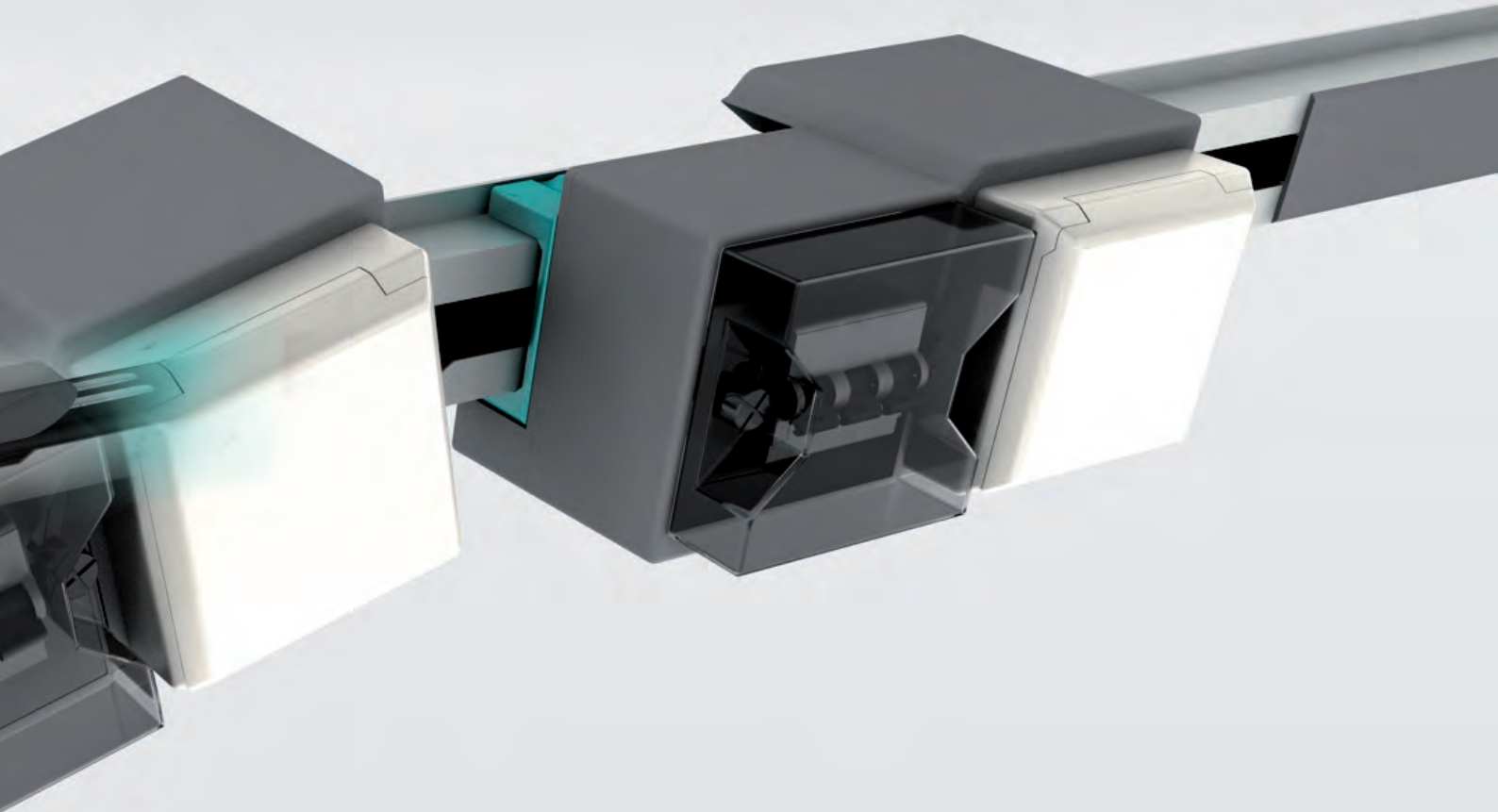
Suspension span of 2 metres with
upright installation and 1.5 metres
with flat installation.



Easy connection system
for fast installation.

Available in lengths of 1, 2, and
3 metres.

Rail panel available in white,
green-turquoise, grey or ruby.
The steel sheet casing can be
coated in all RAL colours at an
extra charge.



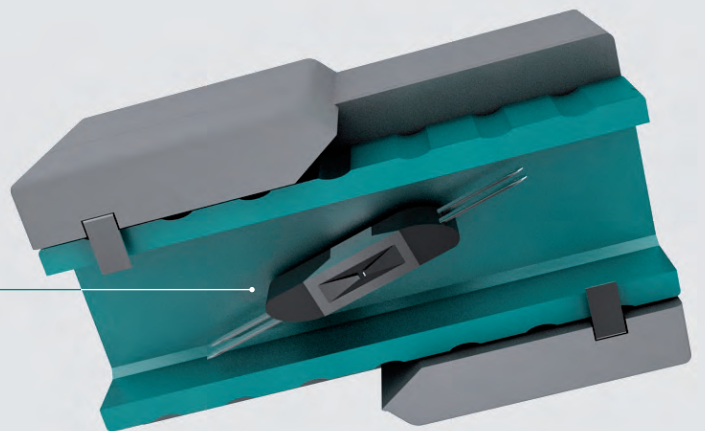
Fast mounting due to preinstalled units.

Easy integration of new outlet casings.
Insert, turn – that's it.

Head or in-line feeding.

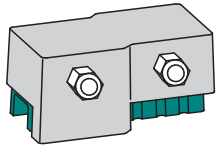
The indestructible Deyle E-Box is a perfect match.

Suspension with the Deyle MS mounting system.

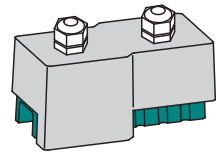


The **contacts** of the Deyle plug line S which are perfectly tuned to your needs.

Contacts
without fuses

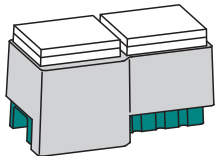
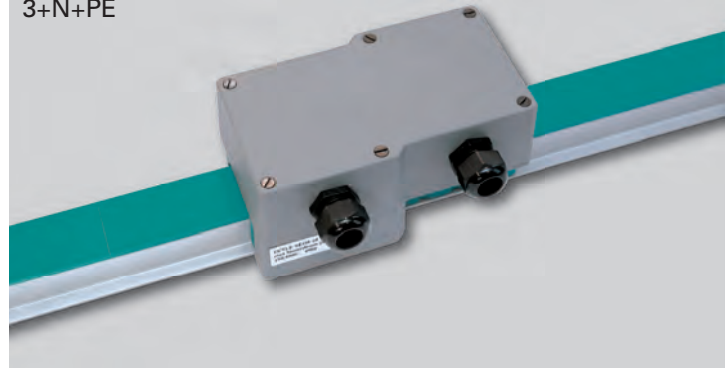


SE05-25/1		
-----------	--	--

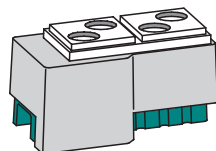


SE05-25/2		
-----------	--	--

Basic unit
3+N+PE

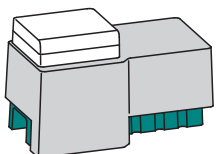
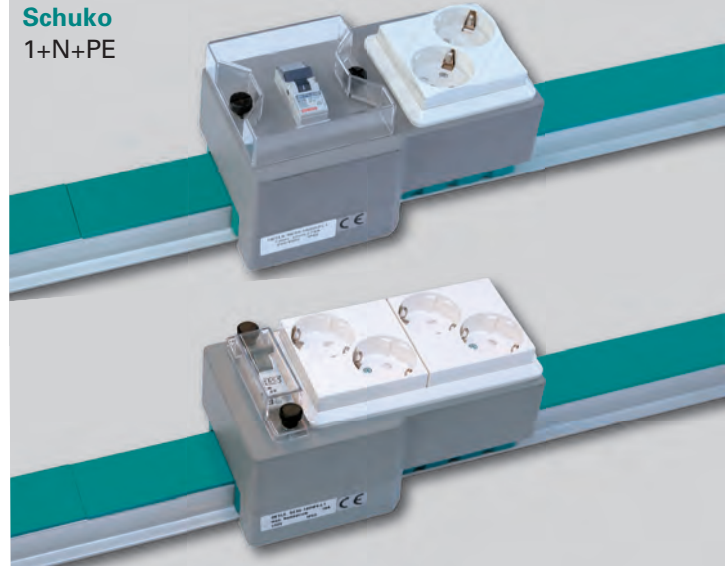


SEN5-16DM	2 x	
-----------	-----	--

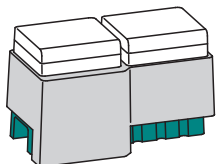


SEN5-16DM4	4 x	
------------	-----	--

Schuko
1+N+PE

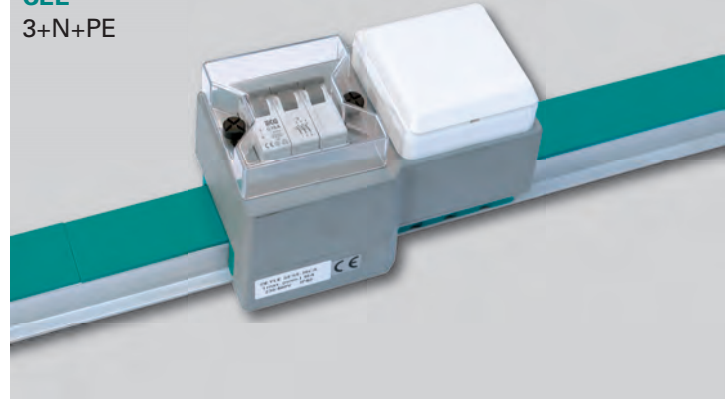


SEN5-16C		1 x CEE16
SEN5-25C		1 x CEE32



SEN5-16DC		2 x CEE16
-----------	--	-----------

CEE
3+N+PE



SEN5-16A

- Plug line S
- N = Normal
- S = Fused (**S**icherung)
- Number of poles
- Current strength
- A = Automatic circuit breaker
- P = Cartridge fuse (**P**atronensicherung)
- D = Twin (**D**oppel)
- C = Cekon
- M = Schuko without fuse
- W = Schuko with fuse

Contacts can be inserted every 12 cm via a cut-out in the profile. When the contact is inserted, you can move it lengthways to its final position.

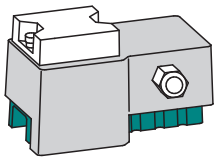
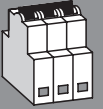
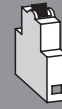
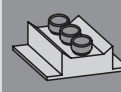
The perfect match in your rooms, for your work flows and for your power demand. The better tailored to your needs, the better, safer and more efficient

your system solution will work. This is why we offer a wide range of modules, collectors, fuses and accessories. Ask us for your customised system solution.

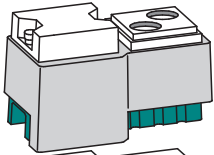
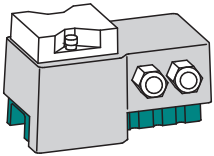
DEYLE

Power all down the line

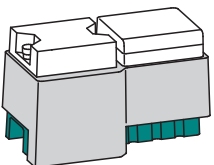
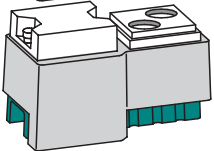
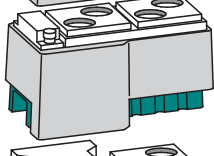
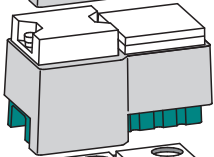
Contacts
with fuses



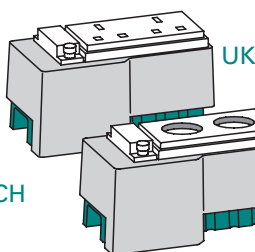
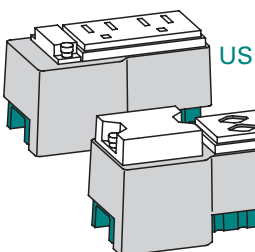
SES5-16P				1 x E14 (max. 16 A)			
SES5-25P				1 x E18 (max. 25 A)			
SES5-16A							1 x C16
SES5-25A							1 x C25
SES5-16A1					1 x B16		
SES5-16A3					3 x B16		
SES5-16A4					1 x B16		1 x C16
SES5-25A4					1 x B16		1 x C25



SES5-16DW2	2 x				1 x B16		
SES5-16WA	1 x				1 x B16		
SES5-16DW4	4 x				1 x B16		
SES5-16DW2-Fi	2 x				1 x B16	1 x 2-pole 0.03 RCCB	



SES5-16CA		1 x CEE5-16					1 x C16
SES5-25CA		1 x CEE5-32					1 x C25
SES5-16C3A			1 x CEE3-16		1 x B16		
SES5-16CA-Fi		1 x CEE5-16				1 x 4-pole 0.03 RCCB	1 x C16
SES5-25CA-Fi		1 x CEE5-32				1 x 4-pole 0.03 RCCB	1 x C25
SES5-16CP (max. 16 A)		1 x CEE5-16		1 x E14			
SES5-25CP (max. 25 A)		1 x CEE5-32		1 x E18			



SES5-16DW2-US	2 x 110 V	1 x B16
SES5-16DW2-CH	2 x 230 V	1 x B16
SES5-16DW2-UK	2 x 230 V	1 x B16
SES5-16DW2-F	2 x 230 V	1 x B16

Contact variants for different countries available on request.

In-line and head feeders of the Deyle plug line S

Feeders **without** fuses for

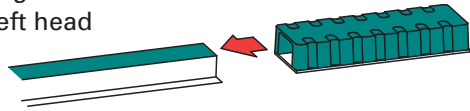
SAN5
-25
25 A

SAN5
-40
40 A

SAN5
-63
63 A

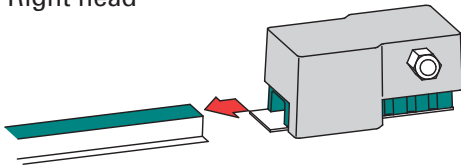
Max.
connection
cross-section

Right and
left head



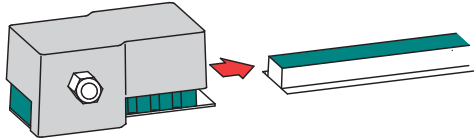
SAS5-40	x	x		6 ²
---------	---	---	--	----------------

Right head



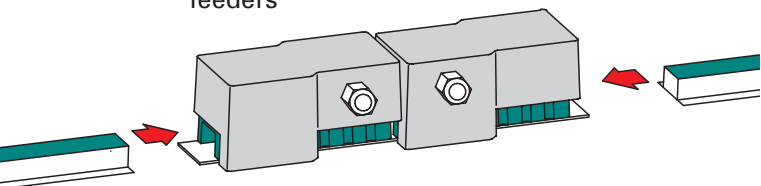
SAS5-40R	x	x		25 ²
SAS5-63R			x	25 ²

Left head



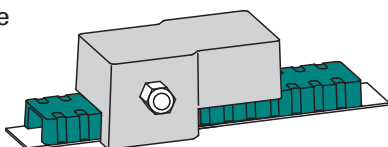
SAS5-40L	x	x		25 ²
SAS5-63L			x	25 ²

2 x in-line
feeders

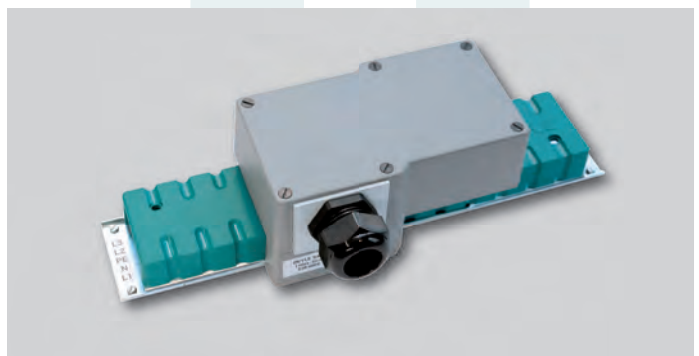


SAS5-40M	x	x		25 ²
SAS5-63M			x	25 ²

1 x in-line
feeder



SAS5-40M1	x	x		25 ²
SAS5-63M1			x	25 ²



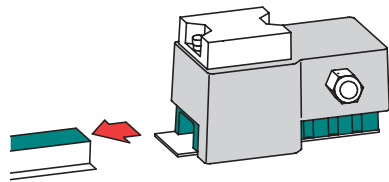
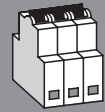
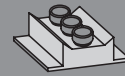
Feeders **with** fuses for

SAN5
-25
25 A

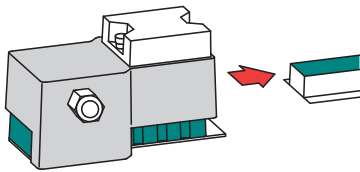
SAN5
-40
40 A

SAN5
-63
63 A

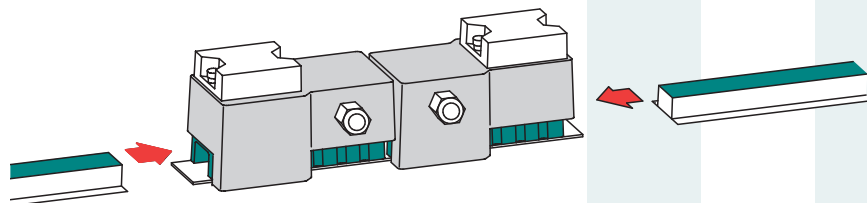
Max.
connection
cross-section



	SAN5 -25 25 A	SAN5 -40 40 A	SAN5 -63 63 A	Max. connection cross-section		
SAS5-16RA	x	x		25 ²		1 x C16
SAS5-16RP	x	x		25 ²	1 x E14 max. 16 A	
SAS5-25RA	x	x		25 ²		1 x C25
SAS5-35RP		x		25 ²	1 x E18 max. 35 A	
SAS5-40RA		x		25 ²		1 x C40
SAS5-63RP			x	25 ²	1 x E18 max. 63 A	
SAS5-63RA			x	25 ²		1 x C63



	SAN5 -25 25 A	SAN5 -40 40 A	SAN5 -63 63 A	Max. connection cross-section		
SAS5-16LA	x	x		25 ²		1 x C16
SAS5-16LP	x	x		25 ²	1 x E14 max. 16 A	
SAS5-25LA	x	x		25 ²		1 x C25
SAS5-35LP		x		25 ²	1 x E18 max. 35 A	
SAS5-40LA		x		25 ²		1 x C40
SAS5-63LP			x	25 ²	1 x E18 max. 63 A	
SAS5-63LA			x	25 ²		1 x C63

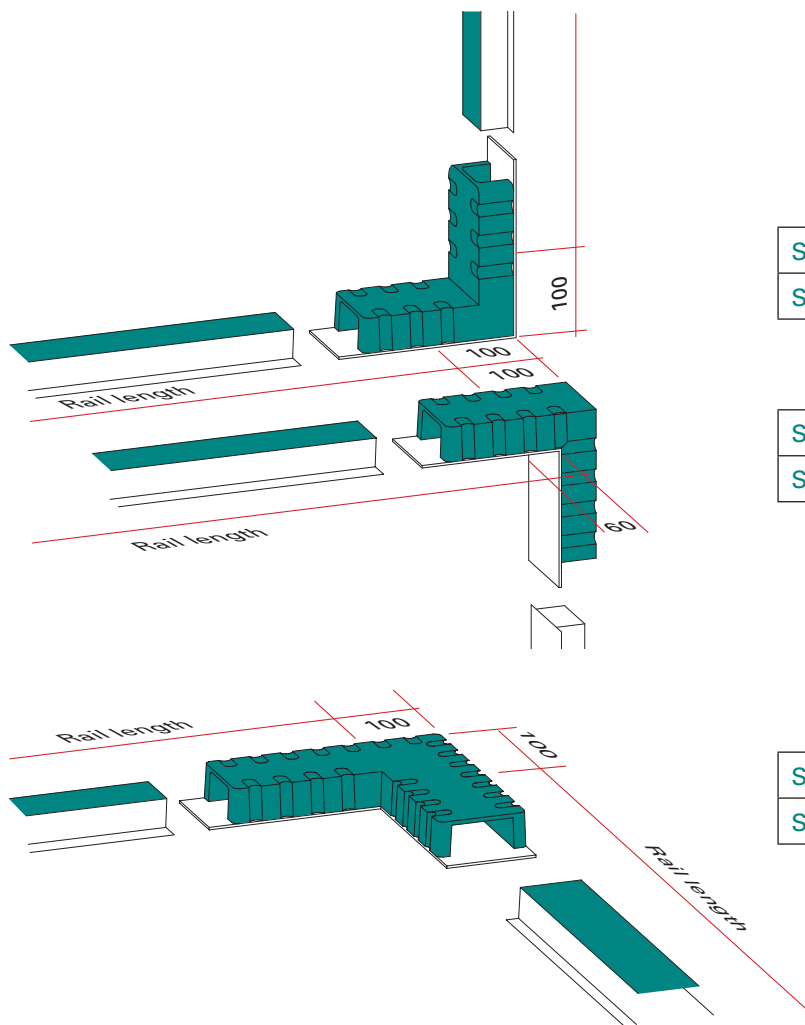


	SAN5 -25 25 A	SAN5 -40 40 A	SAN5 -63 63 A	Max. connection cross-section		
SAS5-16MA	x	x		25 ²		2 x C16
SAS5-16MP	x	x		25 ²	2 x E14 max. 2 x 16 A	
SAS5-25MA	x	x		25 ²		2 x C25
SAS5-35MP		x		25 ²	2 x E18 max. 2 x 35 A	
SAS5-40MA		x		25 ²		2 x C40
SAS5-63MP			x	25 ²	2 x E18 max. 2 x 63 A	
SAS5-63MA			x	25 ²		2 x C63

Each feeder is a twin feeder with electrical separation, i.e.
2 x 16 A / 2 x 25 A /
2 x 40 A / 2 x 63 A

The corner connectors of the Deyle plug line S

Rigid 90° corner connectors

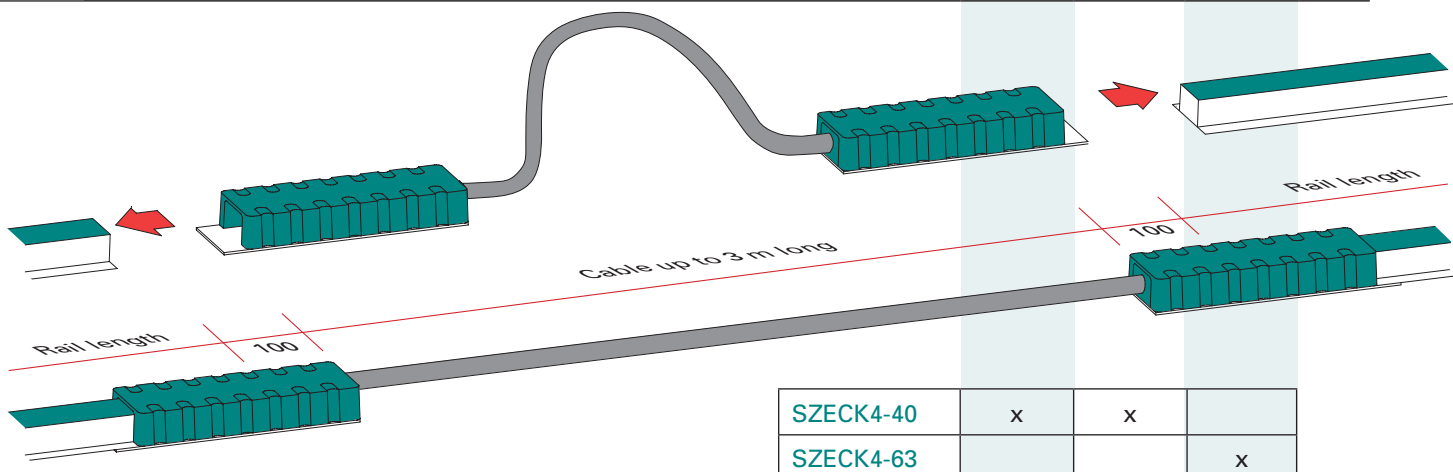


	SAN5 -25	SAN5 -40	SAN5 -63
SZECK1-40	x	x	
SZECK1-63			x

	SAN5 -25	SAN5 -40	SAN5 -63
SZECK3-40	x	x	
SZECK3-63			x

	SAN5 -25	SAN5 -40	SAN5 -63
SZECK2-40	x	x	
SZECK2-63			x

Flexible corner connectors

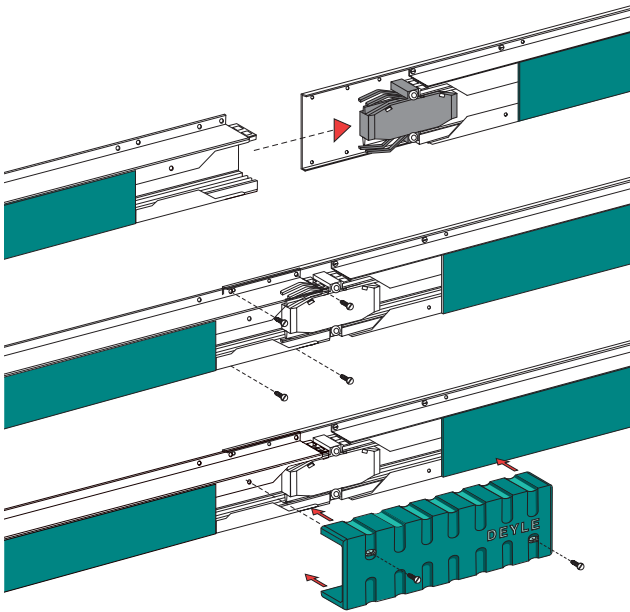


	SAN5 -25	SAN5 -40	SAN5 -63
SZECK4-40	x	x	
SZECK4-63			x

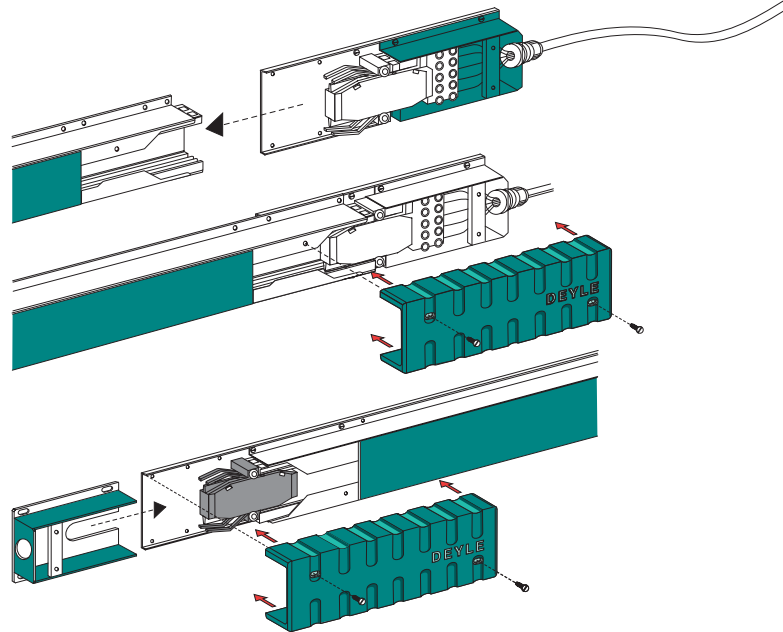
The installation of the Deyle plug line S

DEYLE
Power all down the line

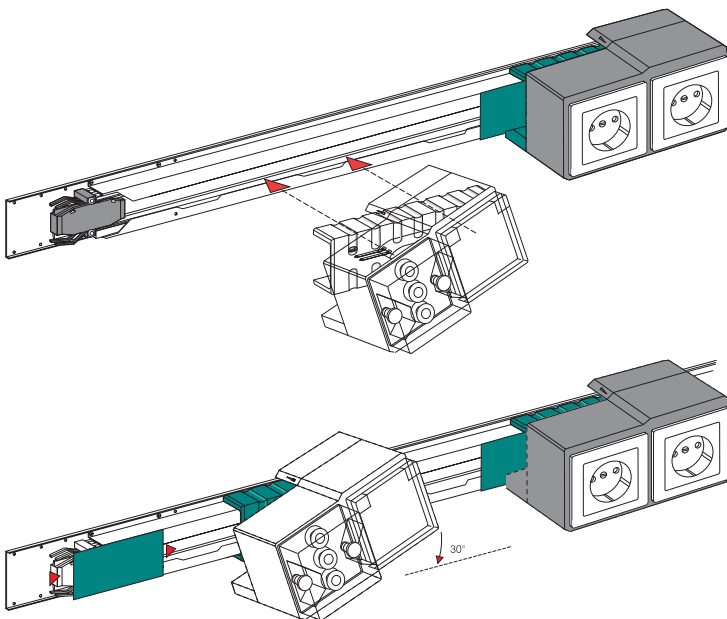
Connecting the rails



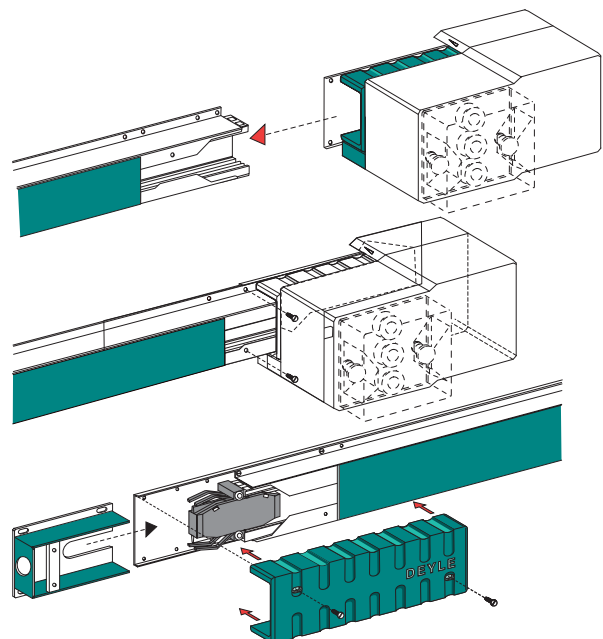
Mounting the head feeder **without** fuse



Mounting the contacts



Mounting the head feeder **with** fuse



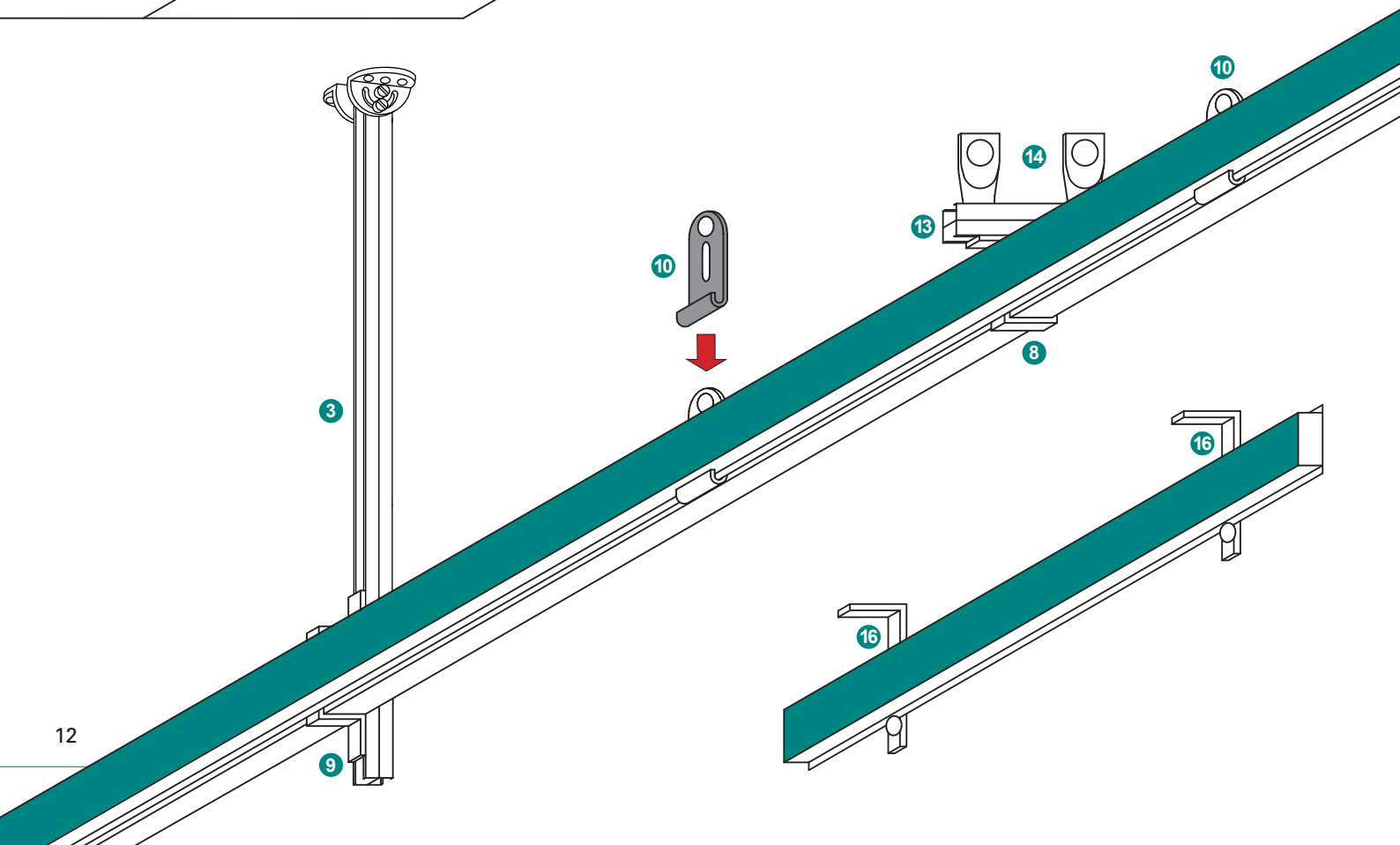
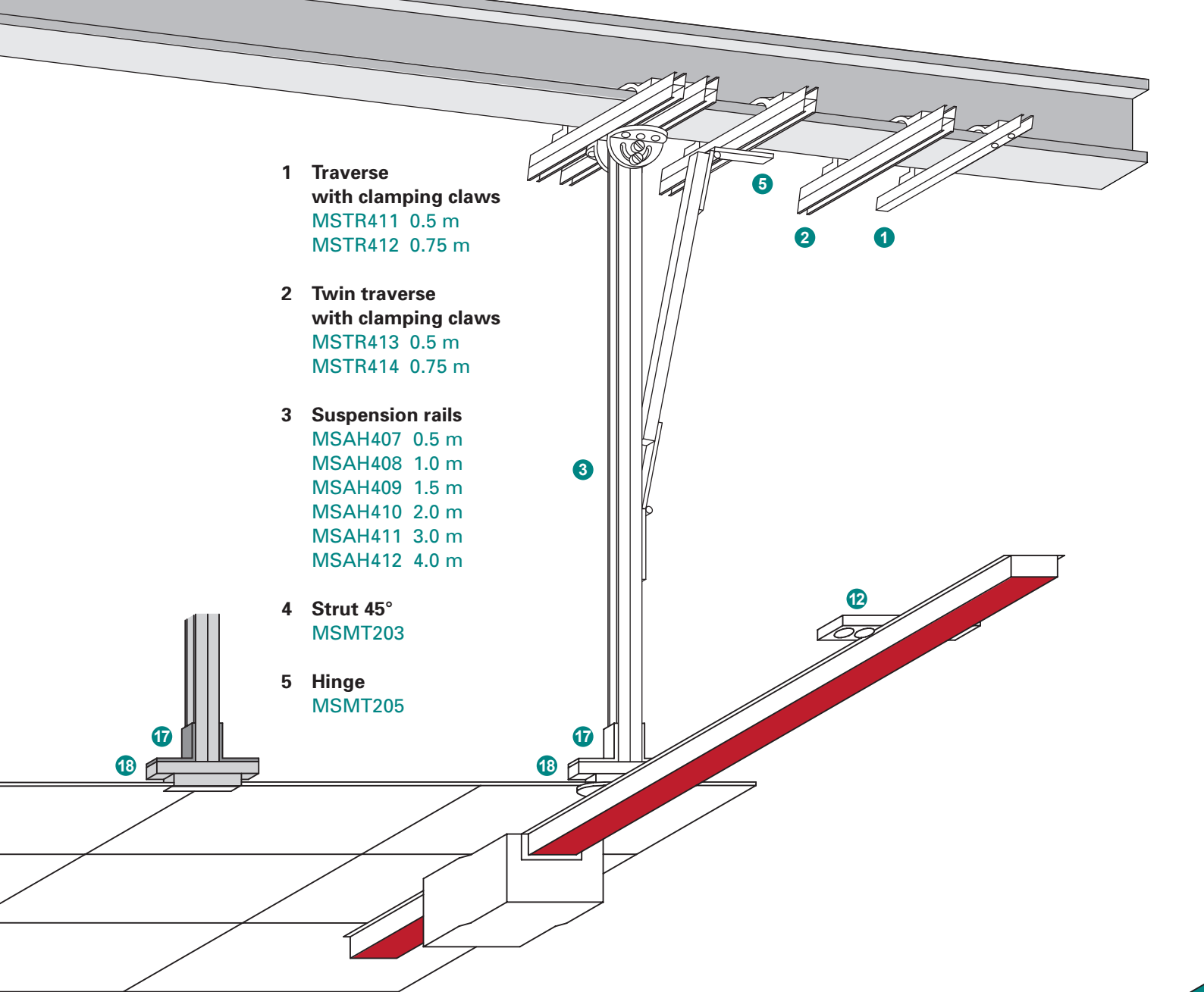
1 Traverse with clamping claws
MSTR411 0.5 m
MSTR412 0.75 m

2 Twin traverse with clamping claws
MSTR413 0.5 m
MSTR414 0.75 m

3 Suspension rails
MSAH407 0.5 m
MSAH408 1.0 m
MSAH409 1.5 m
MSAH410 2.0 m
MSAH411 3.0 m
MSAH412 4.0 m

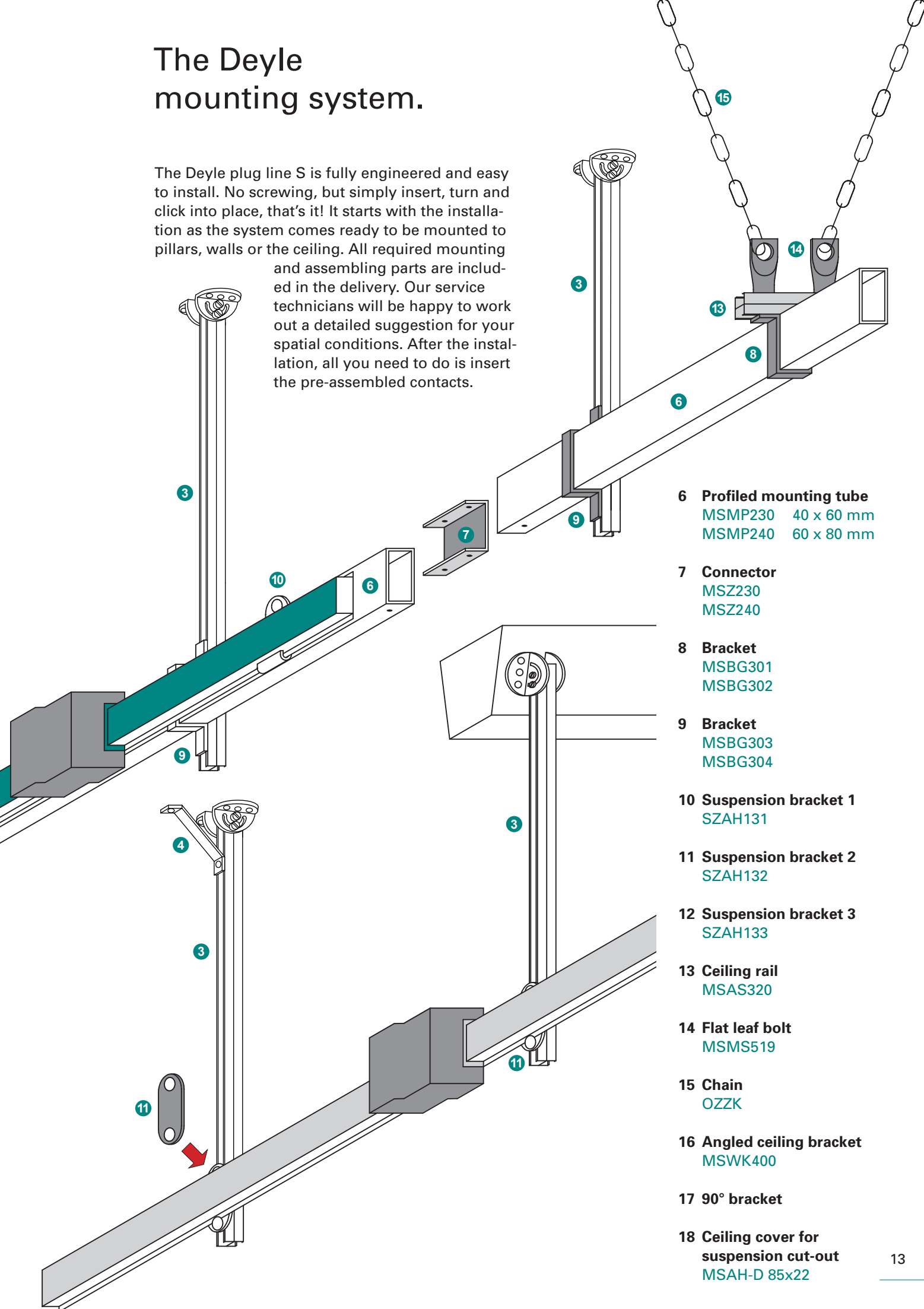
4 Strut 45°
MSMT203

5 Hinge
MSMT205



The Deyle mounting system.

The Deyle plug line S is fully engineered and easy to install. No screwing, but simply insert, turn and click into place, that's it! It starts with the installation as the system comes ready to be mounted to pillars, walls or the ceiling. All required mounting and assembling parts are included in the delivery. Our service technicians will be happy to work out a detailed suggestion for your spatial conditions. After the installation, all you need to do is insert the pre-assembled contacts.



6 Profiled mounting tube
 MSMP230 40 x 60 mm
 MSMP240 60 x 80 mm

7 Connector
 MSZ230
 MSZ240

8 Bracket
 MSBG301
 MSBG302

9 Bracket
 MSBG303
 MSBG304

10 Suspension bracket 1
 SZAH131

11 Suspension bracket 2
 SZAH132

12 Suspension bracket 3
 SZAH133

13 Ceiling rail
 MSAS320

14 Flat leaf bolt
 MSMS519

15 Chain
 OZZK

16 Angled ceiling bracket
 MSWK400

17 90° bracket

18 Ceiling cover for suspension cut-out
 MSAH-D 85x22

Examples of installations from all industries.

Deyle plug lines convince at most different places of use, like in the automotive or textile industry, in workshops as well as in schools or laboratories. Just everywhere where safety and efficiency are called for.

A short list of our reference projects:

- **AUDI**, automotive, Mexico
- **Bosch**, electric tools, Leinfelden
- **Brunnhuber**, cranes, Augsburg
- **German Federal Armed Forces**, Penzing
- **Continental**, tyres, Hannover
- **Dungs**, gas safety engineering, Urbach
- **ebm**, electric motor manufacturing, Mulfingen
- **EnBW**, power utility, Stuttgart
- **EON**, hydropower plant, Landshut
- **FESTO**, automation engineering, Esslingen
- **Franciscan Sisters** of Schönbrunn, convent
- **Fraunhofer Institute**, Freiburg
- **Vocational College**, Donaueschingen
- **HARIBO**, sweets, Bonn
- **University of Hamm-Lippstadt**, Hamm
- **HILTI**, fastening engineering, Kaufering
- **Hornbach**, DIY store, Driebergen (Netherlands)
- **HYMER**, caravans, Waldsee
- **Indupress**, presses for textile industry, Hösbach
- **Intertex-Maschinenbau GmbH & Co KG**, dynamic storage systems, Eislingen
- **JVA** penal institution, Landsberg
- **MEWA-Textilien AG**, textile services, work clothes, industrial textiles, Immenhausen
- **Miele**, electric domestic appliances, Gütersloh



- **NATO**, aircraft hangars, Norway
- **NDR**, television, Hamburg
- **Porsche**, automotive, Stuttgart-Zuffenhausen
- **Siemens**, switchgear cabinet manufacturing, Erlangen
- **Thyssen-Krupp Steel Europe AG**, surface engineering, Dortmund
- **Trigema**, sports and leisure wear, Burladingen
- **Triumph**, lingerie, textiles, Heubach
- **Trumpf**, punching machines, Hettingen
- **Waldner GmbH & Co KG**, laboratory equipment, Wangen
- **ZF-Friedrichshafen AG**, transmissions, Lemförde

DEYLE

Power all down the line



At ebm-papst in Mulfingen, the plug line S is used in automated assembly lines.



Deyle – power all down the line.

For 60 years, the original Deyle bus bars have ensured reliable energy transmission to collectors. Our first installations are still in use, proving the outstanding quality and sustainability of our systems. We have manufactured contact lines, rail and socket distribution units, cable feeder rails and safety bars since 1954.

In 1993, we added a totally new product range with frame heaters for opticians and hearing aid audiologists, which have set a European-wide standard for the whole industry today.

Deyle Power belongs to the Mehl Group, which also owns the Leich + Mehl brand, a leading manufacturer of weighing and labelling equipment. The Mehl Group is a family-run enterprise in the second and third generation.

Deyle Power is innovative, absolutely reliable and offers premium quality. Our competent and friendly customer service will be happy to help you any time, also after having delivered your bus bar system.



This in mind, you should contact us when you plan to have **power all down the line**. We will be happy to support you with our know-how earned in 60 years. Contact us and benefit from our rich pool of tips and tricks. We assist engineering offices in creating requests for tender.

The DEYLE products:

Trolley bus bar Type B

The rugged industrial trolley bus bar.

Trolley bus bar Type D

The compact trolley bus bar.

Festoon cable system F

The cost-effective cable system.

Plug line S

Power wherever you want.

The Deyle switch bar

Safe switching.

Passat frame heaters

For opticians and hearing aid audiologists.



The winning company!

DEYLE

Power all down the line

Deyle GmbH

Tulpenstraße 50

71394 Kernen i.R.

Phone +49 (0)7151 4 10 46

Fax +49 (0)7151 4 68 06

mail@deyle-power.de

www.deyle-power.de